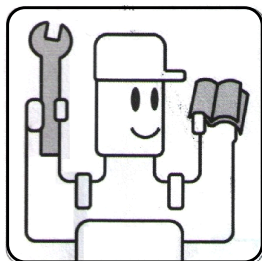
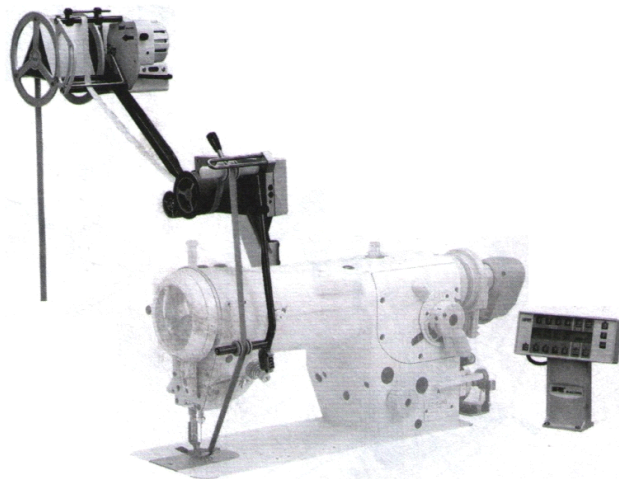


# MC M8

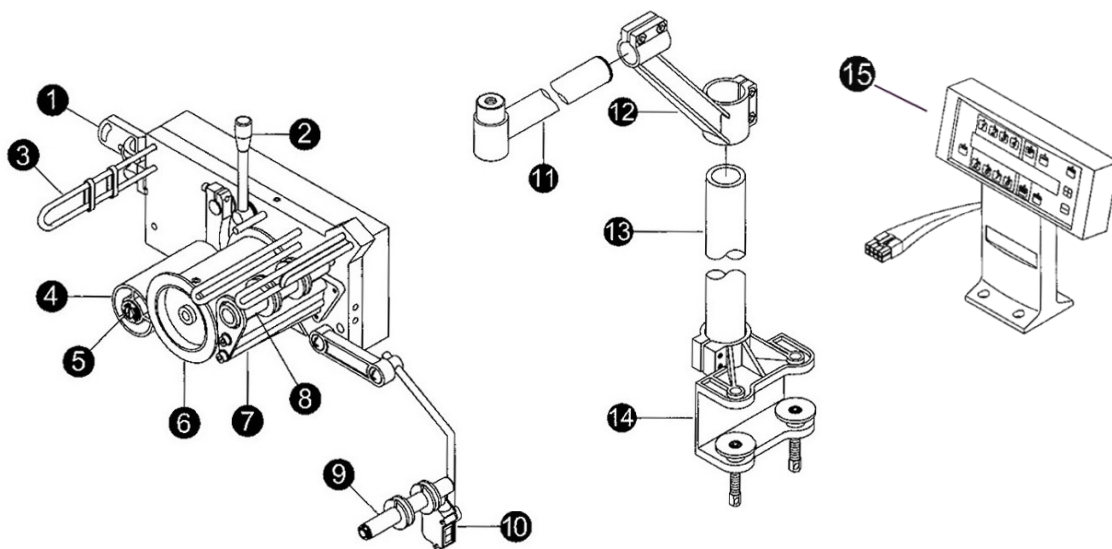
## 使用说明 INSTRUCTION MANUAL



- 安装前，请仔细阅读安装说明书。
- PLEASE READ INSTRUCTIONS & ASSOCIATED DRAWINGS BEFORE INSTALLATION.

目录	INDEX	
安装说明	INSTALLATION GUIDE.....	2~3
接线图	... WIRING DIAGRAM.....	4
归零校正	... 0Kg. CALIBRATION.....	5
调整	..... ADJUSTMENTS.....	6~7
零件图	..... PARTS LIST.....	8~9
控制面板说明	FINDING YOUR WAY AROUND THE CONTROL PANEL.....	10
操控说明	OPERATION GUIDE.....	11~18
故障排除	TROUBLE SHOOTING.....	19

组件名称	ACCESSORIES LIST
------	------------------



- 1.驱动组连结架
- 2.把手
- 3.导带杆
- 4.副轮
- 5.副轮偏心轴
- 6.驱动轮
- 7.保护架
- 8.感应轮
- 9.辅助轮

- 1. Joint
- 2. Handle Bar
- 3. Holder
- 4. Auxiliary Roller
- 5. Auxiliary Roller Shaft
- 6. Driven Roller
- 7. Secure Holder
- 8. Secure Roller
- 9. Auxiliary Roller

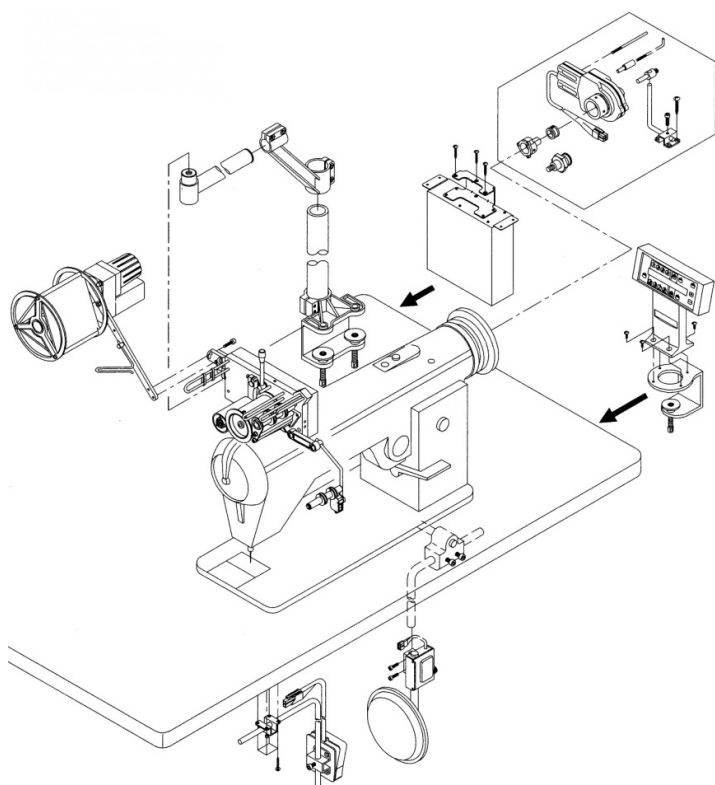
- 10. 换段显示器
- 11. 横杆
- 12. 连结架
- 13. 支柱
- 14. 夹座
- 15. 控制面板

- 10. LED Indicator
- 11. Arm
- 12. Joint Stand
- 13. Holder
- 14. Clamping Base
- 15. Control Panel

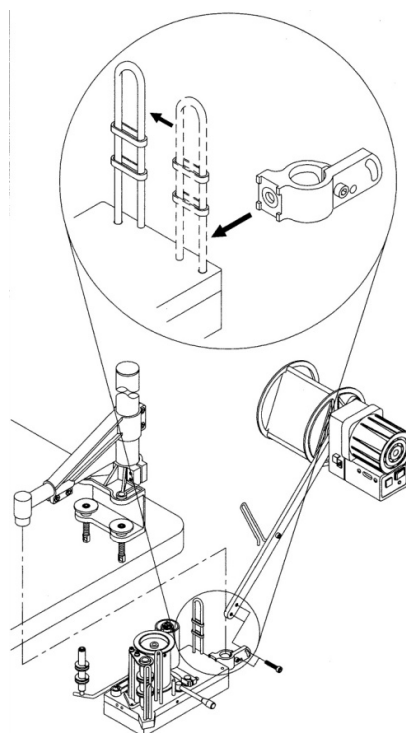
MC M8 系列组合图

THE ASSMBLE DIAGRAM FOR MC M8 SERIES

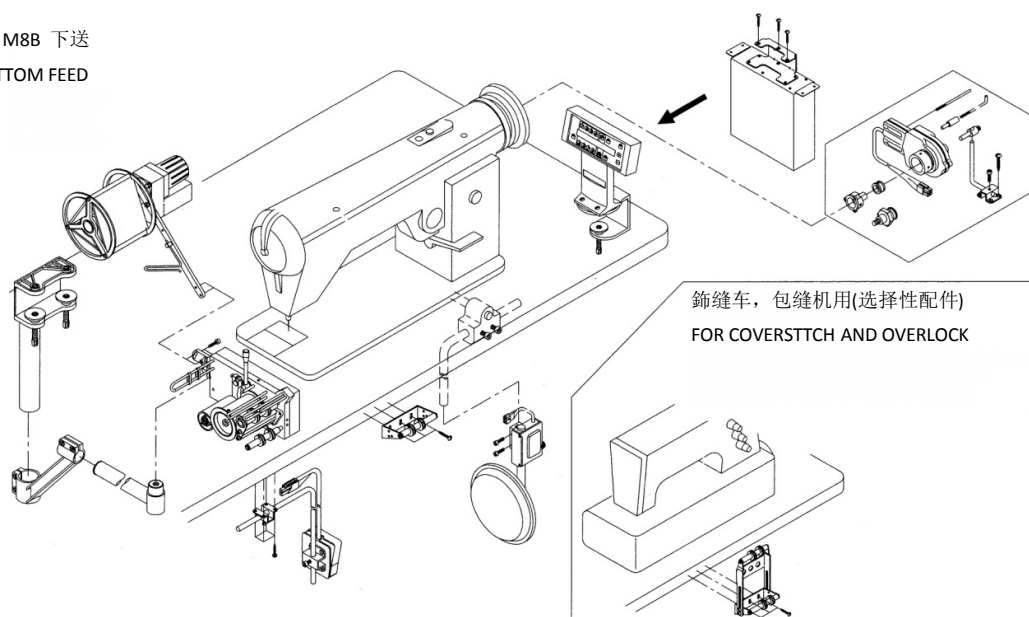
MC M8U 上送  
UPPER FEED



MC M8S 侧送  
SIDE FEED



MC M8B 下送  
BOTTOM FEED

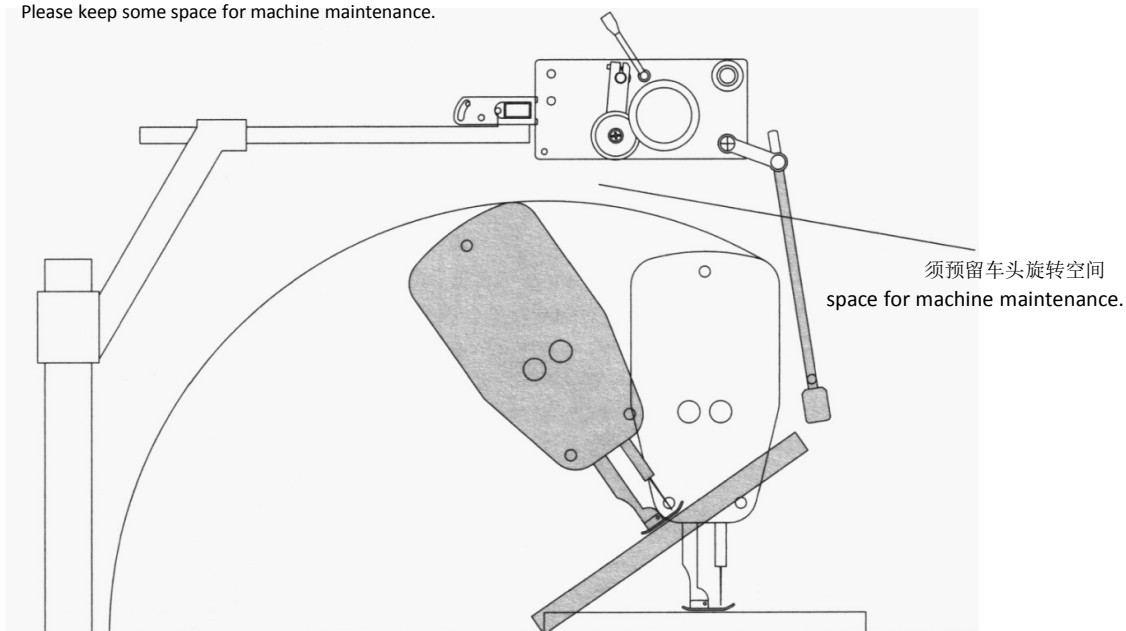


高度调整

HEIGHT

须预留车头旋转空间，但不宜过高。

Please keep some space for machine maintenance.

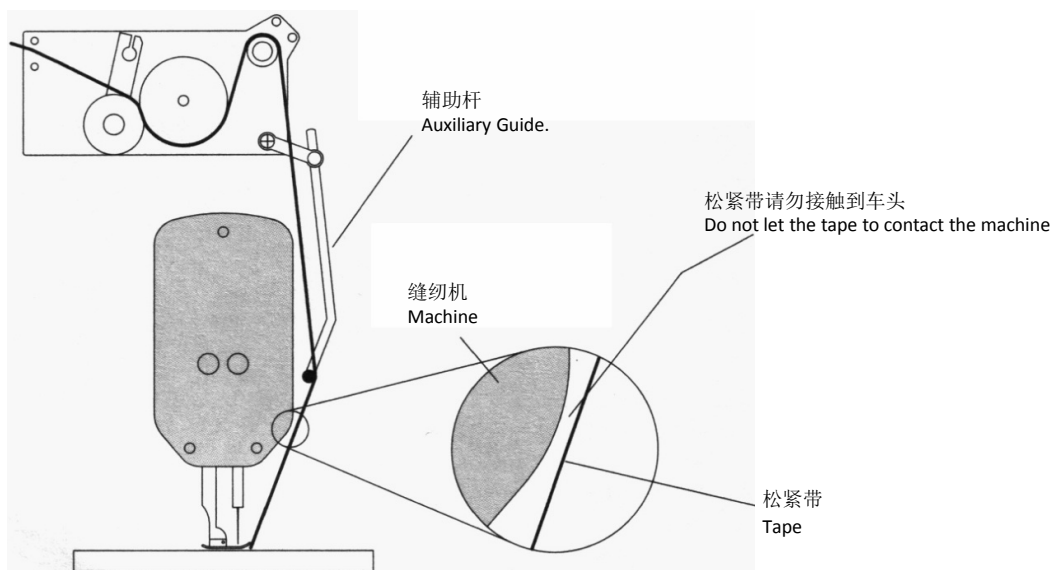


辅助杆调整

Auxiliary Guide

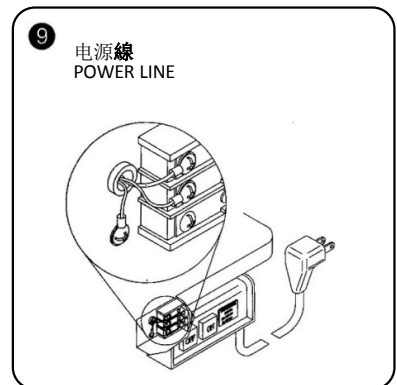
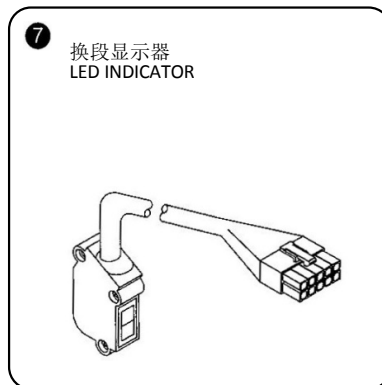
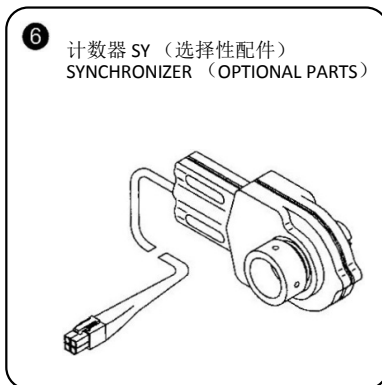
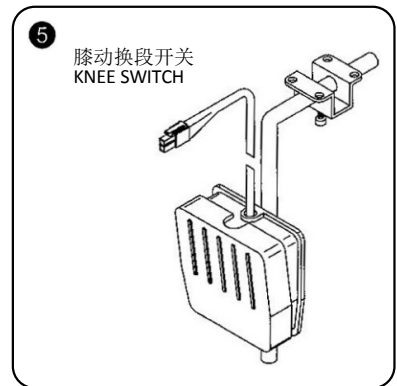
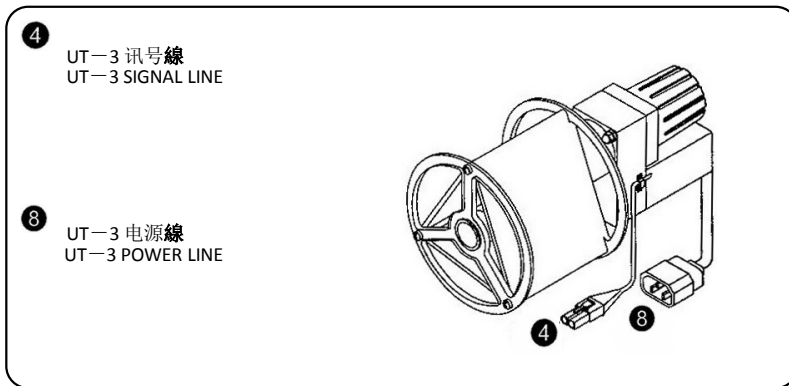
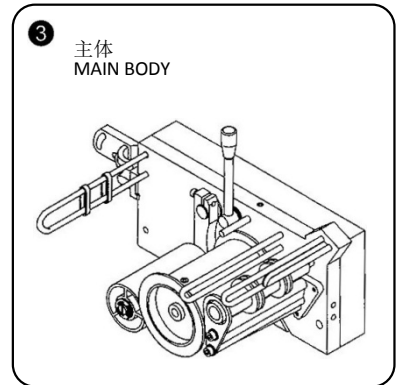
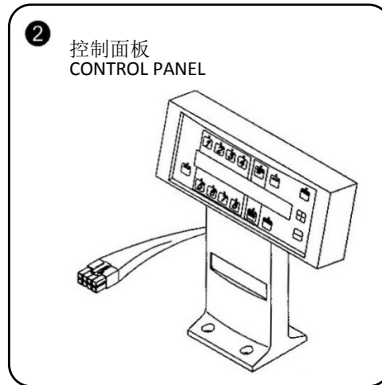
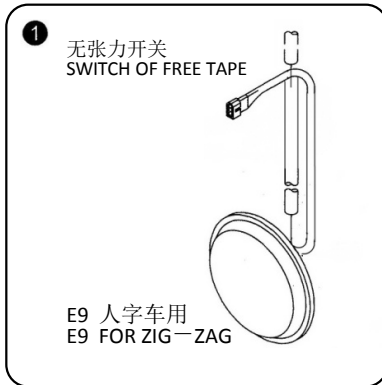
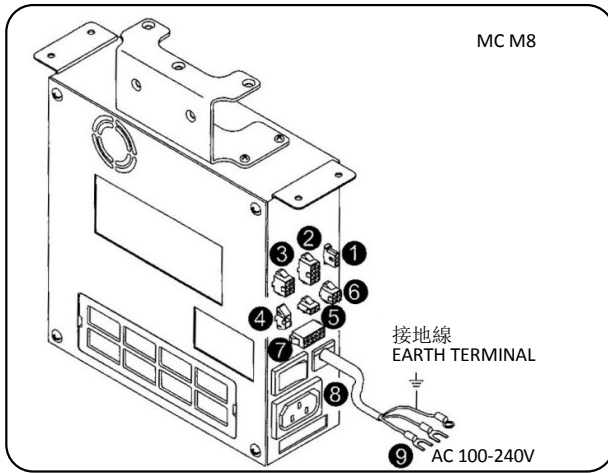
松紧带接触到车头，将会影响到车缝尺寸，可用辅助杆移开。

Please use the Auxiliary Guide to avoid the taps to contact the machine.



接線圖

WIRING DIAGRAM



# 归零校正

# 0Kg CALIBRATION

以下情况须要做归零校正：

- 1.本装置安装完成后。
- 2.尺寸有异常不稳定时。
- 3.感应轮在无负载的状态（移开感应轮上的松紧带），在任何一段工程中，送料值在980~999之间的其中一值，（灵敏度必须设定在99），而驱动轮未停止转动时。

Always correct the calibration after the following instances：

- 1.After installation.
- 2.If the device is feeding irregularly.
- 3.If the driven roller can not stop. In any section.  
The driven roller must stop when the tension value to be adjusted between 980-990 and the sensitivity is set at 99 after remove the elastic tape from the sensor bar (Make sure nothing Contact with Sensor Bar).

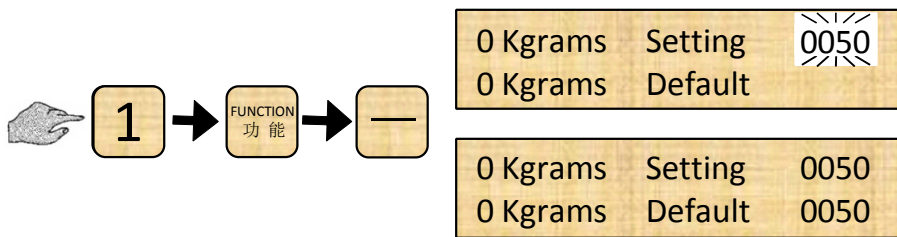
操作说明：

OPERATION GUIDE：

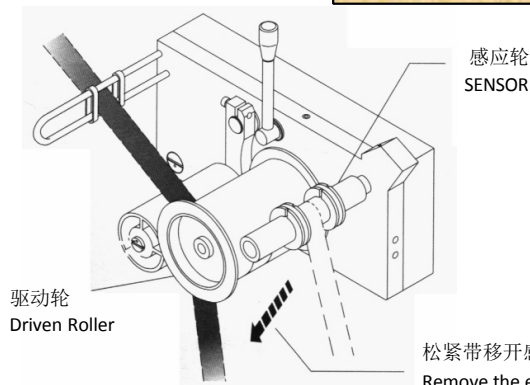
归零校正时应移开感应轮之松紧带（如下图 ※）

Please remove the elastic tape before calibration (Refer to the following figure).

须按2秒以上（功能键） PUSH MORE THAN 2 SEC.



注意：如果准归零后，其数值不介于10~90之间时，即表示装置有问题，需要检修。



Notice: If the value is Not between 10~90 after Regular Calibration. The device Needs to be REPAIRED.

# 调整

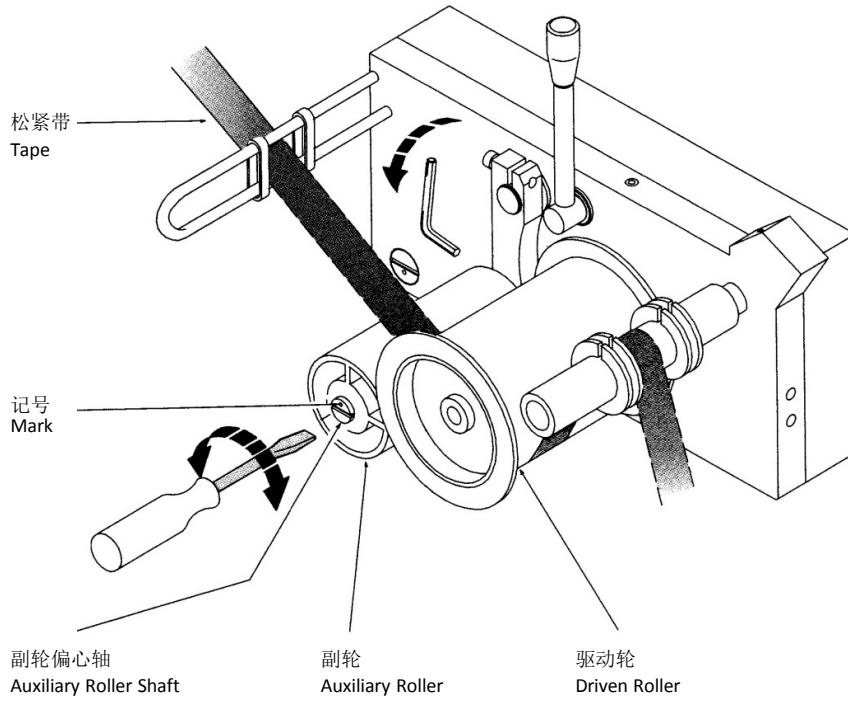
# ADJUSTMENTS

## 松紧带左右偏差调整

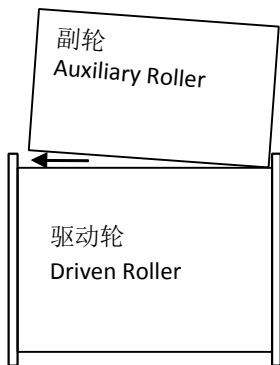
## Adjustment for tape sliding over the roller

副轮偏心轴可调整松紧带左右的偏差。

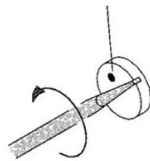
Adjust Eccentric Shaft of the Auxiliary Roller can let the tape to go the Right or Left side.



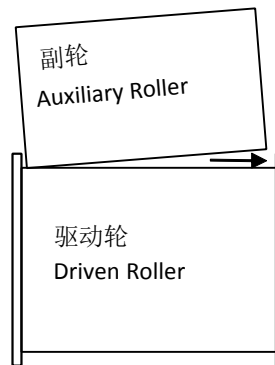
调整松紧带往左边  
Adjust to the Left side



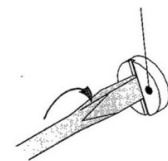
记号往左边  
Mark turn to the Left



调整松紧带往右边  
Adjust to the Right side



记号往右边  
Mark turn to the Right



# 调整

# ADJUSTMENTS

灵敏度调整说明：车缝时驱动轮及松紧带发生前后颤动不停时（如图二），需适当调整灵敏度值，每段工程均可调整，边调灵敏度、边用手拉松紧带，直到无震荡为止（如图三）（灵敏度值从00—99，出厂设定值为↓90）

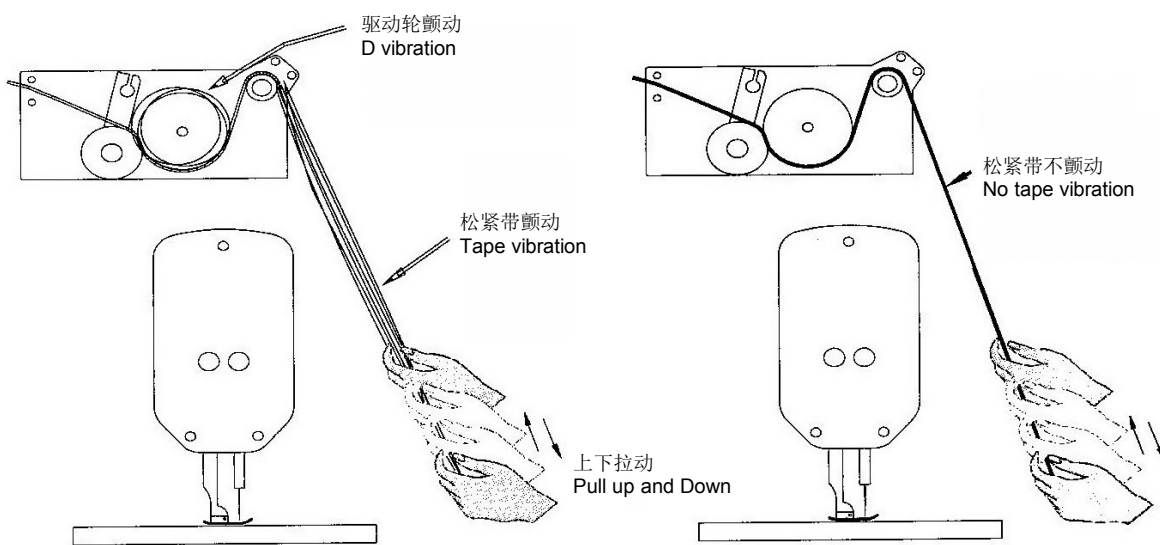
Sensitivity Adjustment: If the driven roller and elastic occur lasting vibration forward and backward while sewing.(Adjustable from 0-99. The default setting is 90) the tape must be pulled manually while the value is being adjusted. This allows you to feel if there is any vibration occurring(please refer to Figure 2 & Figure 3).

注意：如果灵敏度值调得过小，虽不会有震荡现象，但会影响尺寸的准确度。因此在不震荡的情况下值越大越好。

Notice: If the value is too less. It will effect the accuracy. Therefore, the value is better with large with large number without vibrator

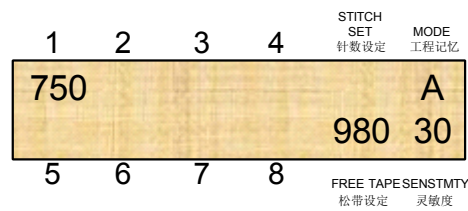
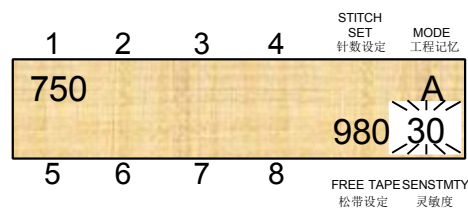
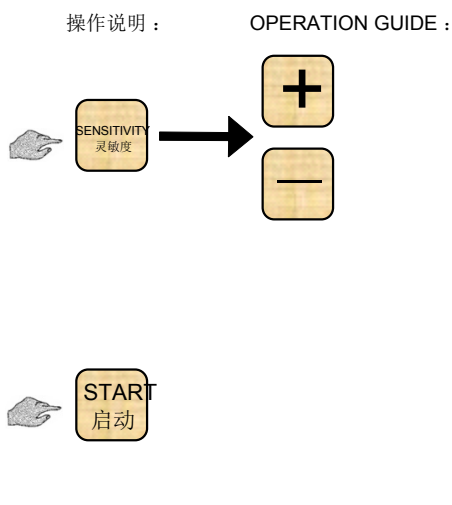
图二 调整前  
Figure 2. Before adjust

图三 调整后  
Figure 3. After adjust



例三：内容：调整灵敏度  
EXAMPLE 3.Context: Adjust the sensitivity value.

工程 Section	送料值 Feed	灵敏度 Sensitivity
1	750	30






# 零件图

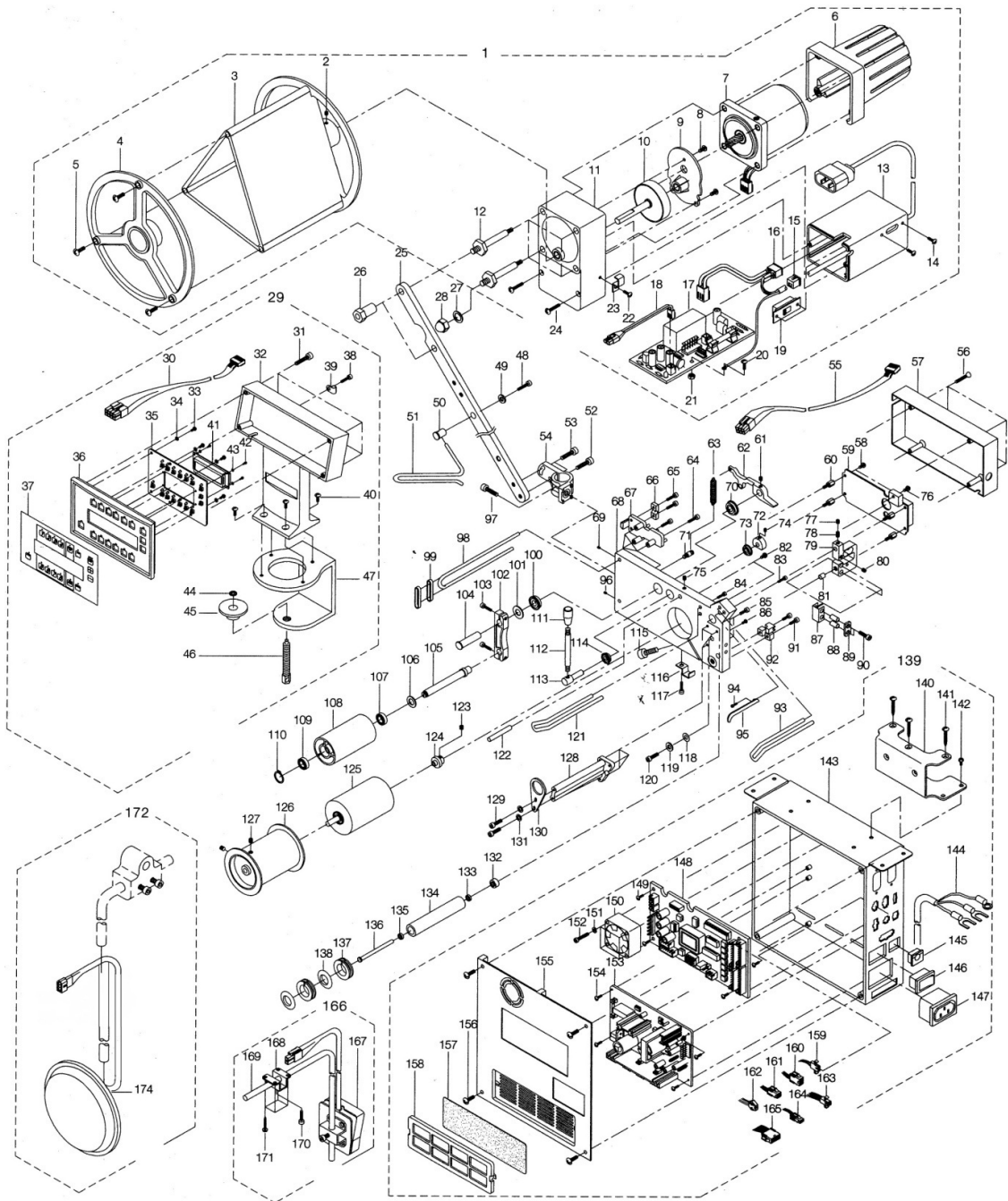
# PARTS LIST

MC M8 系列零件图                      PARTS LIST FOR MC M8 SERIES

记号说明  
Mark Description

 选择配件  
optional parts

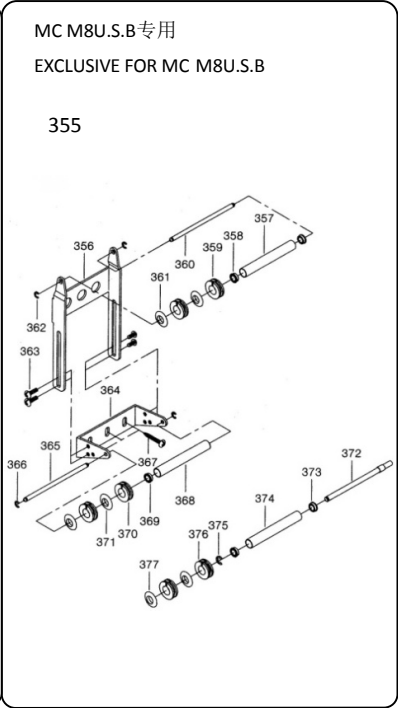
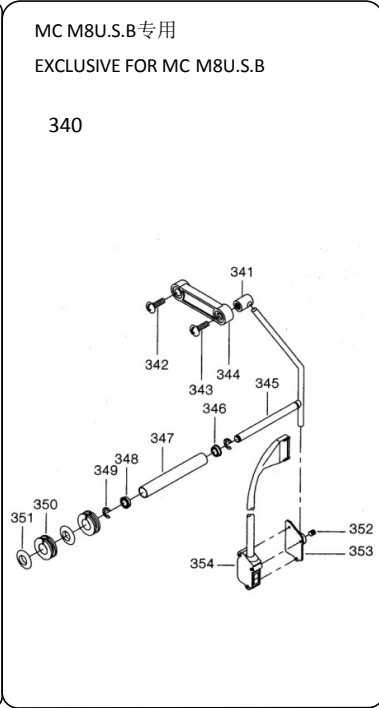
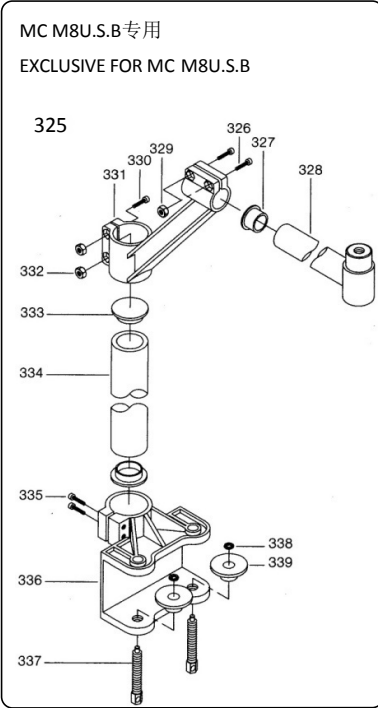
 选择性配件, 请告针车厂牌机型。  
Please indicate sewing machine model NO.  
for optional parts



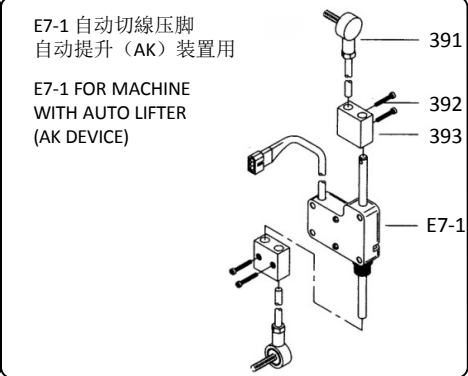
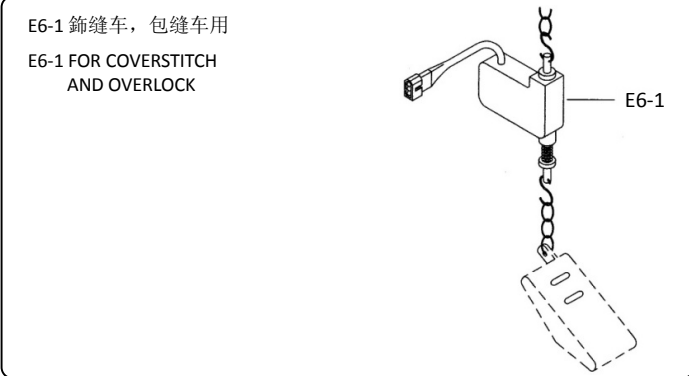
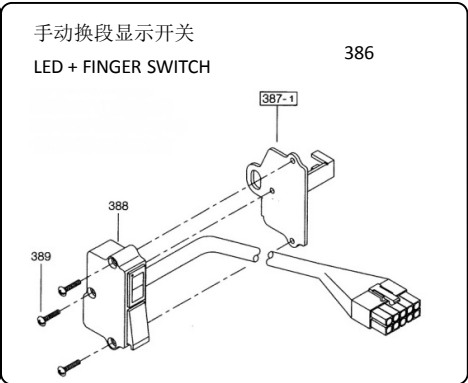
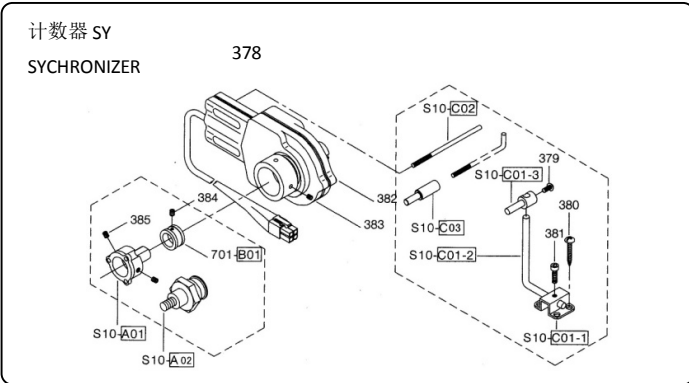
零件图

PARTS LIST

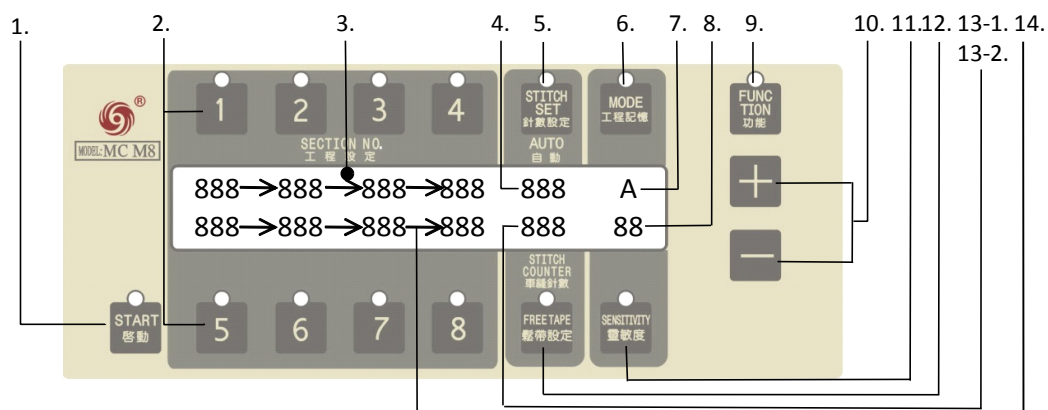
MC M8 系列零件图 PARTS LIST FOR MC M8 SERIES



选择性配件 OPTIONAL PARTS



图一 FIGURE 1



视窗及按键说明：(参照图一)

\* : 需配合计数器SY装置 (选择配件)

- |         |           |  |
|---------|-----------|--|
| 1.      | 启动键:      | 进入车缝模式用。                                 |
| 2.      | 工程设定选择键:  | 共有八段工程可供设定松紧度。                           |
| 3.      | 送料值显示窗:   | 显示各段工程松紧度之设定值, 一共有八段, 每段设定值均可从1~999。     |
| * 4.    | 计数设定键:    | 显示针数设定数值, 空白或1~999。                      |
| * 5.    | 计数设定显示窗:  | 於自动换段车缝时设定使用 (参照第14~16页)。                |
| 6.      | 工程记忆键:    | 可储存26组 (A~Z) 不同工程内容的资料, 每组可达八段。          |
| 7.      | 工程记忆显示窗:  | 显示工程记忆之设定值 (A~Z)。                        |
| 8.      | 灵敏度显示窗:   | 显示灵敏度之设定值从1~99。                          |
| 9.      | 功能设定键:    | 特殊功能设定 (参照第5页)。                          |
| 10.     | + , - 键:  | 使用+ , - 键来更改各项功能的设定值。                    |
| 11.     | 灵敏度设定键:   | 依紧带及紧度须调整灵敏度, 每段均可设定, 以达到稳定车缝效果 (参照第7页)。 |
| 12.     | 松带设定键:    | 设定无张力松带值 (参照第17页)。                       |
| * 13-1. | 针数显示窗:    | 自动换段车缝时, 显示车缝时的针数, 最多针数999针。             |
| 13-2.   | 松带值显示窗:   | 显示松紧带设定值从900~999。                        |
| * 14.   | 自动换段显示箭号: | 於自动换段时所显示之箭号。                            |

Control panel Instructions : Refer to Figure 1

\* : These functions are only available with the Stitch Counter-SY (Optional)

- |         |                         |  |
|---------|-------------------------|--|
| 1.      | START:                  | Push Start to normal sewing operation.   |
| 2.      | SECTION TENSION:        | To set each Sections tension, Up to 8 different Sections per program.                  |
| 3.      | SECTION PANEL:          | Displays all the Sections status from 1~999.   |
| * 4.    | STITCH DISPLAY:         | Indicated then number of stitches to be sewn from 1~999 for Auto section change.       |
| * 5.    | STITCH SET:             | Stitch count setting (page 14~16).   |
| 6.      | MODE:                   | Use this key to memorize up to 26 different programs from A~Z.(page18)                 |
| 7.      | MODE DISPLAY:           | Indicates the Mode which you have set (A~Z).   |
| 8.      | SENSITIVITY DISPLAY:    | Indicates the sensitivity which you have set from 1~99.                                |
| 9.      | FUNCTION SETTING KEY:   | Press this key to activate for setting the SPECIAL functions (page5).                  |
| 10.     | + , - KEY:              | Use the + , - key to modify all settings.  |
| 11.     | SENSITIVITY:            | Adjust this value for Different tapes and tensions for stable sewing (page19).         |
| 12.     | FREE TAPE:              | To eliminate Tension on the tape.  |
| * 13-1. | STITCH COUNTER DISPLAY: | During Stitch Counter-(SY) operation, indicates the number of stitches sewn up to 999. |
| 13-2.   | FREE TAPE DISPLAY:      | Indicates the free tape value from 900~999.  |
| * 14.   | STITCH ARROW:           | Indicates Auto change to the next section.   |

# 控制说明

# OPERATION GUIDE

符号说明 Description for Special Figures Used in This Manual:



当其数值闪烁时，表示其值处于可修改的状态中。

The Value can be modified when the value is flashing.



於两个段数中出现箭头符号时，表示具有自动换段之功能。  
(需要计数器装置配合，选择性配件)

This signal means sections will change automatically by stitch counter-SY.

如不需要较多的段数，连续按两次下一段数的键即解除以下之段数。

Push the next section bottom twice to erase setting in selected setting from.

操作说明： OPERATION GUIDE :



1	2	3	4	STITCH SET 针数设定	MODE 工程记忆
750	680	735	725		A
672	746	737	825	960	70
5	6	7	8	STITCH COUNTER 松带设定	SENSTMTY 灵敏度

1	2	3	4	STITCH SET 针数设定	MODE 工程记忆
750	680				A
				960	70
5	6	7	8	STITCH COUNTER 松带设定	SENSTMTY 灵敏度

如不需要自动换段功能时，连续按两次计数设定键即解除。

Push any of the section Stitch set bottom twice to disable the function of Auto Switch section function.

操作说明： OPERATION GUIDE :



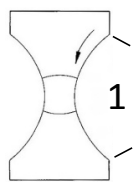
1	2	3	4	STITCH SET 针数设定	MODE 工程记忆
750	680				A
				075	70
				960	
5	6	7	8	STITCH COUNTER 车缝针数	SENSTMTY 灵敏度

1	2	3	4	STITCH SET 针数设定	MODE 工程记忆
750	680				A
				000	70
5	6	7	8	STITCH COUNTER 车缝针数	SENSTMTY 灵敏度

# 操控说明

# OPERATION GUIDE

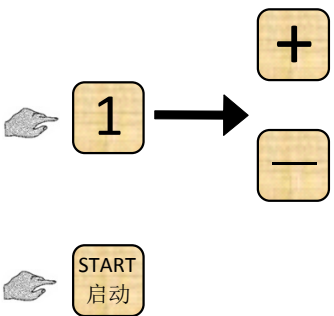
送料值操作说明：（本说明内容将由简单渐进至复杂方式）  
 OPERATION GUIDE : (From Easy to Complex)



例一： 内容： 单段工程：  
 EXAMPLE 1. Context : Single Section

工程 Section	送料值 Feed	针数 Stitch
1	750	

操作说明： OPERATION GUIDE :



1	2	3	4	STITCH SET 针数设定	MODE 工程记忆
750				980	A
5	6	7	8	STITCH COUNTER 车缝针数	SENSMTMY 灵敏度

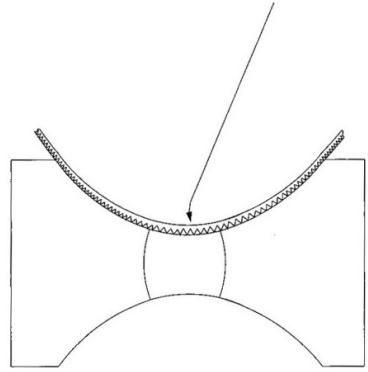
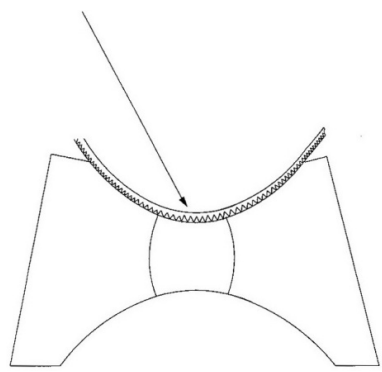
  

1	2	3	4	STITCH SET 针数设定	MODE 工程记忆
750				980	A
5	6	7	8	STITCH COUNTER 车缝针数	SENSMTMY 灵敏度

送料值调整比较说明：  
 FEED VALUE ADJUSTMENT GUIDE :

送料值小  
 SMALLER FEED NUMBER.

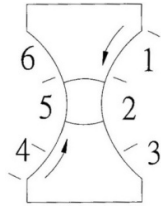
送料值大  
 LARGER FEED NUMBER.



# 操控说明

# OPERATION GUIDE

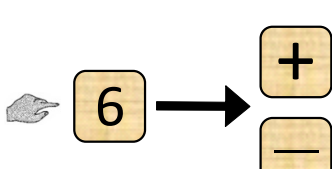
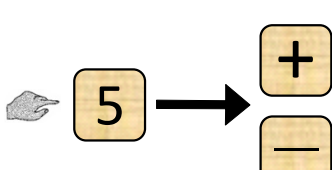
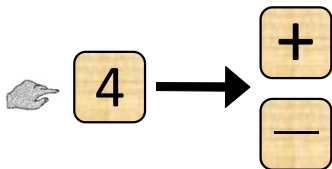
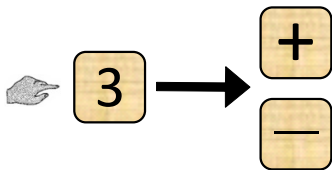
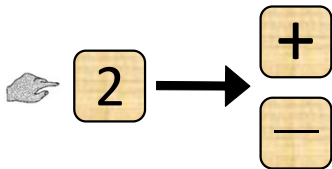
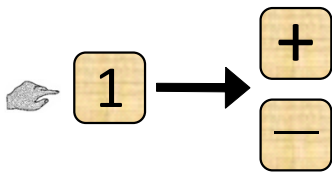
例二： 内容： 六段工程设定（为手动或膝动换段）。  
 EXAMPLE 2. Context : All Sections require Manual changes.



工程 Section	送料值 Feed	针数 Stitch
1	750	
2	680	
3	735	
4	726	
5	672	
6	746	

操作说明：

OPERATION GUIDE :



1	2	3	4	STITCH SET 针数设定	MODE 工程记忆
750					A
				980	90
5	6	7	8	FREE TAPE 松带设定	SENSTMITY 灵敏度

1	2	3	4	STITCH SET 针数设定	MODE 工程记忆
750	680				A
				980	90
5	6	7	8	FREE TAPE 松带设定	SENSTMITY 灵敏度

1	2	3	4	STITCH SET 针数设定	MODE 工程记忆
750	680	735			A
				980	90
5	6	7	8	FREE TAPE 松带设定	SENSTMITY 灵敏度

1	2	3	4	STITCH SET 针数设定	MODE 工程记忆
750	680	735	726		A
				980	90
5	6	7	8	FREE TAPE 松带设定	SENSTMITY 灵敏度

1	2	3	4	STITCH SET 针数设定	MODE 工程记忆
750	680	735	726		A
672				980	90
5	6	7	8	FREE TAPE 松带设定	SENSTMITY 灵敏度

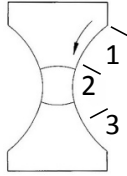
1	2	3	4	STITCH SET 针数设定	MODE 工程记忆
750	680	735	726		A
672	746			980	90
5	6	7	8	FREE TAPE 松带设定	SENSTMITY 灵敏度

1	2	3	4	STITCH SET 针数设定	MODE 工程记忆
750	680	735	726		A
672	746			980	90
5	6	7	8	FREE TAPE 松带设定	SENSTMITY 灵敏度

# 操控说明

# OPERATION GUIDE

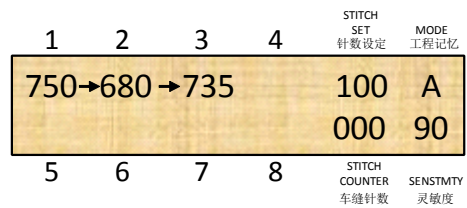
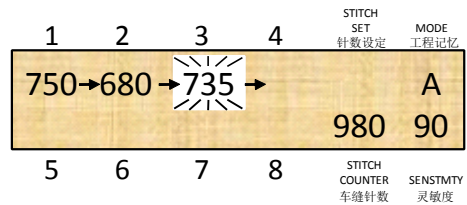
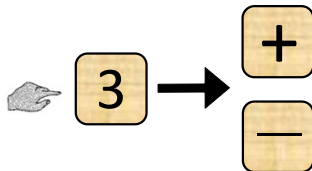
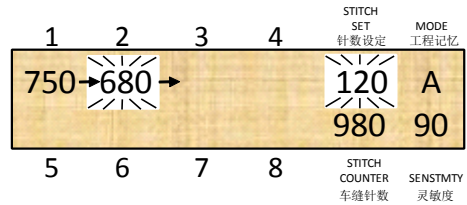
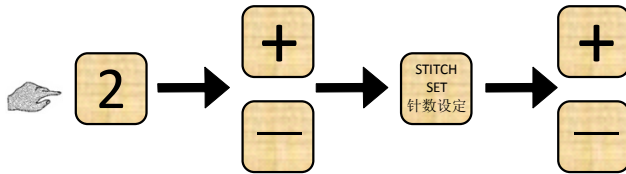
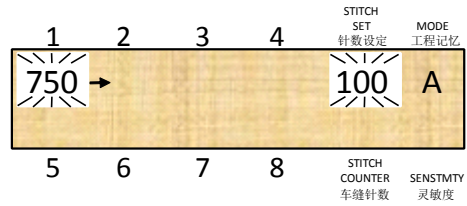
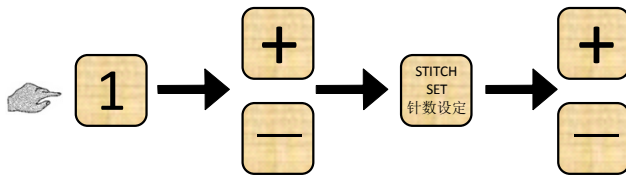
例三: 内容: 第1.2工程为自动换段 (需要计数器SY装置配合, 选择性配件)。  
 EXAMPLE 3. Context: Section 1.2 are Auto-section change (Optional stitch Counter-SY Required.)



工程 Section	送料值 Feed	针数 Stitch
1	750	100
2	680	120
3	735	

操作说明:

OPERATION GUIDE:

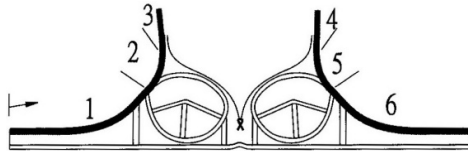


# 操控说明

# OPERATION GUIDE

例四： 内容： 内衣上围两边缝制时左右的布纹方向有所不同，因此需要6段来完成（需要计数器SY装置配合，选择性配件）。  
 EXAMPLE 4. Context : Sewing Two Upper sides Of The Brassiere. Due to the different Tensions require 6 sections (Optional stitch Counter-SY Required.)

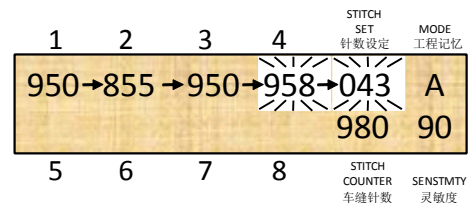
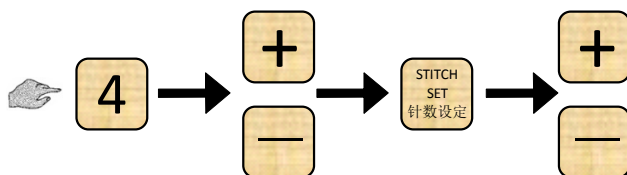
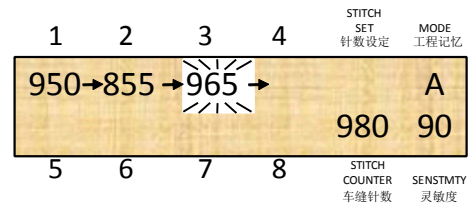
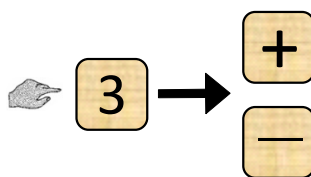
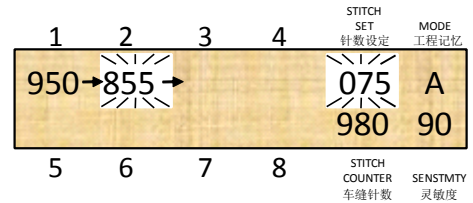
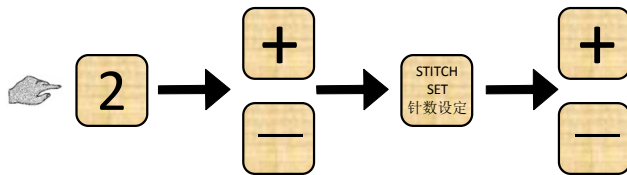
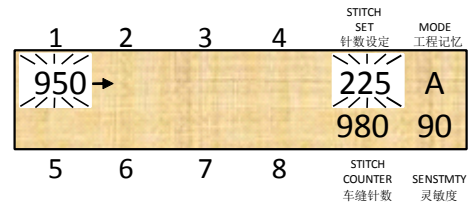
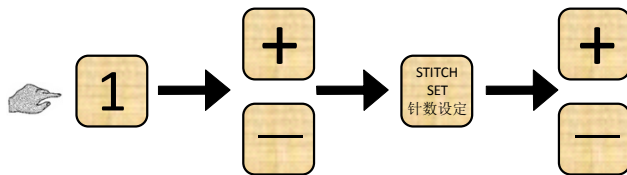
设定： 1, 2, 4, 5工程为自动换段；  
 SETTING: 3, 6工程为膝动（或手动）换段。  
 Section 1,2,4,5 are all Auto-Section Chang;  
 Section 3 and 6 are MANUAL.



工程 Section	送料值 Feed	针数 Stitch
1	950	225
2	855	75
3	965	
4	958	43
5	842	68
6	936	

操作说明：

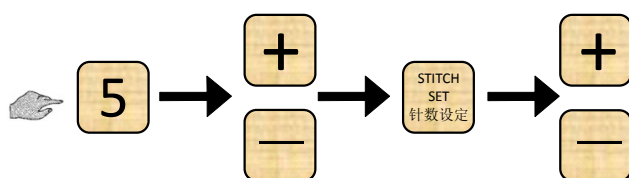
OPERATION GUIDE :



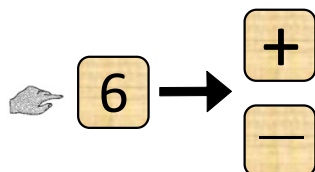


# 操控说明

# OPERATION GUIDE



1	2	3	4	STITCH SET 针数设定	MODE 工程记忆
950	→855	→965	958	→068	A
842				980	90
5	6	7	8	STITCH COUNTER 车缝针数	SENSITMTY 灵敏度



1	2	3	4	STITCH SET 针数设定	MODE 工程记忆
950	→855	→965	958	→	A
842	→936			980	90
5	6	7	8	STITCH COUNTER 车缝针数	SENSITMTY 灵敏度



1	2	3	4	STITCH SET 针数设定	MODE 工程记忆
950	→855	→965	958	→225	A
842	→936			000	90
5	6	7	8	STITCH COUNTER 车缝针数	SENSITMTY 灵敏度

注意：因车缝过程中的换段完全由针数器（SY）侦测进行自动换段，所以须注意下列要项，以免影响尺寸及计数设定。

- 1.车缝裁片需要大小相同。
- 2.车缝的启动位置必须一致。

NOTICE : Due to the Auto-Section change function , please care the following. Information to avoid error in the stitch counter setting.

- 1.With same cutting size of the material.
- 2.Always start cutting at the same place for every piece.

松带值操作说明 FREE TAPE OPERATION

例五： 内容： 设定松带功能。  
 EXAMPLE 5. Context : Setting Free Tape Function.

松带值的设定：配合不同的松紧带，需要设定不同的值，否则值过多会造成松紧带太松而掉落，反之值太少使得松紧带太紧而移出布料（出厂设定值：980）。

Free Tape Operation Guide: The different tape should use the different setting. Otherwise, the Free Tape Function may cause too tight or to loose(The default is 980).

注意：此功能必须配合E9或E6-1/E7-1无张力开关操作使用（参照第4及9页）。

NOTICE: This function is used with E9 or E6-1/E7-1 switch (Refer to page 4 & page 9).

注：因松带设定显示窗与车缝计数显示窗是共用的，所以须注意，当按了松带设定键后，显示窗会出现一组闪烁数字，此时代表为松带的设定值，值愈大愈松。设定完成后按启动键，显示窗数字则又回到显示车缝计数的状态。

PS: There are two value in this location. One is STITCH COUNTER. The other is Free Tape. After press the FREE TAPE bottom. The value will become Flashing that means you can adjust the value of FREE TAPE larger Number will become looser. After finishing the setting. Press START bottom, this location's will become STITCH COUNTER display.

针数设定操作说明：

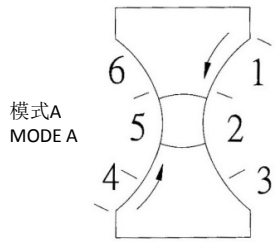
OPERATION GUIDE :

# 操控说明

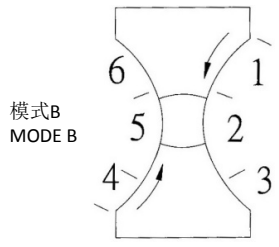
# OPERATION GUIDE

工程记忆操作说明: 此功能提供使用有记忆26组不同的车缝模式, 使用者可快速选择事先储存的记忆模式, 无须重新设定。  
 MODE OPERATION: This function provides user to memorize up to 26 different sewing modes. User can rapidly switch the MODE Which is already set, Not necessary to re-set the MODE again.

例六: 内容: 更换样式, 模式切换, 由模式A换到模式B。  
 EXAMPLE 6. Context: Switch the MODE from MODE A to MODE B.

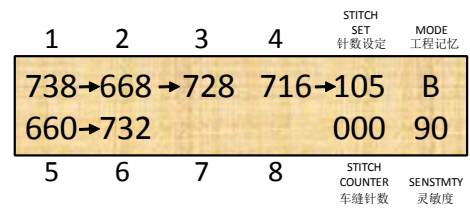
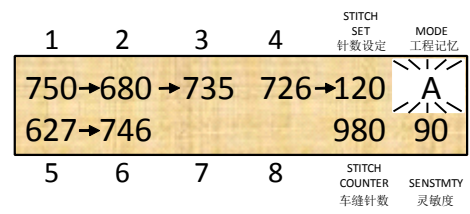
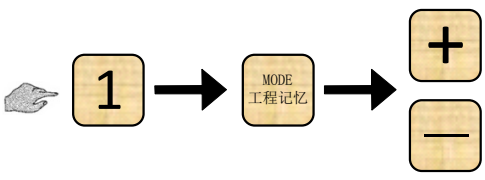


工程 Section	送料值 Feed	针数 Stitch
1	750	120
2	680	132
3	735	
4	726	66
5	627	138
6	746	



工程 Section	送料值 Feed	针数 Stitch
1	738	105
2	668	122
3	728	
4	716	68
5	660	118
6	732	

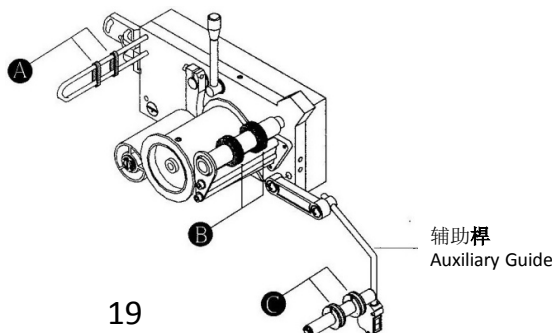
操作说明: OPERATION GUIDE:



# 故障排除

# TROUBLE SHOOTING

问题现象 symptom	原因 Cause	对策 Solution
送带机异常振动 Vibration	1. 支架各固定螺丝松驰。 2. 灵敏度值过高。 1.Fixed screw loosen. 2.The value of Sensitivity is too high.	1. 上紧松驰的螺丝。 2. 降低灵敏度值, 参照第 7 页调整。 1.Check and Tighten the screws. 2.Lower the of Sensitivity ,refer to the page 7.
送带数值999仍然过紧 999 still too tight	1. 感测杆有异物接触碰撞 2. 感应值不在正常范围	1. 请将异物移除 2. 参照第 5 页作归零校正, 如值不在10—90范围内, 通知维修人员进行维修
送带数值000仍然过松 000 still too loose	1. Something contact with the sensor bar 2.The sensor is not at the working range	1.Remove the irrelevant object 2.Redo the 0Kg Calibration page 5. call the technician to maintain if the value is not between 10-90
送带机无动作 No signal	1. 电源未接妥善 2. 线路系统断路 3. 控制系统故障 1.Power is not connected properly 2.Connected line is break 3.Electronic control system error	1. 参照第 4 页接好电源 2. 检查各线路插座与插头接角是否松脱 3. 通知维修人员进行维修 1.Refer to the page 4. 2.Check the pin of connecting plug or socket are not close. 3.Call the technician to maintain.
螢幕不显示 Blank panel	面板故障 Panel out order	通知维修人员进行维修 Call the technician to maintain.
模式数值无法记忆 Cannot memorize The Mode	记忆体故障 Memory out of order	通知维修人员进行维修 Call the technician to maintain.
启动后, 松紧带无法回拉至所设定的松紧度 After turn on the power, The elastic tape can not Back to reach the setting tension	无张力开关 (E6-1, E7-1, 参照第 9 页) 动作不正常 Switcher of Free Tape (E6-1,E7-1, Refer to the page 9) is not working Properly Un-plug the Switches of Free Tape	请拆下无张力开关的电源插头后, 若可正常回拉则表示: 1. 无张力开关位置不良, 应调整 2. 无张力开关故障, 通知维修人员进行维修 If the elastic tape can pull back normally, it means: 1.The position of Switches if Free Tape is not in good position, please re-adjust. 2.The Switches of Free Tape is out of order, Call the technician to maintain.
车缝不准确 Unstable Elastic Size Control	1. 进带过程不顺畅: 1-1. 限宽环 A B C 太窄造成送带过程产生阻力 (如下图) 1-2. 车缝时松紧带与车头或其它物体接触产生摩擦 1.Un-smooth feeding path way for the Tape: 1-1.The width of Elastic Guide Rings at A B C Refer to the following Figure) for the Tape Is too narrow to feed the tape 1-2.The Elastic Tape contacts to the Machine Head or other obstacle which causes friction	1-1. 限位环如下图 A B C 无押脚导轨靠边器及押脚上之限位装置均需要调整略宽松於松紧带 (注: 如因此造成车缝时松紧带左右移位时, 请调整 A B C 限宽环的正确位置) 2-2. 调整辅助桿, 将所有松紧带隔离所有接触的车头或物体 (请参照第3页: “辅助桿调整”) 1-1.Adjust the proper width of All Guide include on the Pressure Foot.(P.S. Pls. Re-location of Elastic Guide Rings, if the Tape is sliding to the right or left irregularly. 1-2.Use Auxiliary Roller to prevent the from contacting the machine or other obstacle.
	2. 灵敏度调整不灵 3. 缝制员手势熟练及布料裁剪尺寸不均 2.Improper Sensitivity setting 3.Unskilled operator and irregularly cutting	2. 依松紧带材质的伸缩性调整灵敏度, 伸缩度越大灵敏度调整需越高, 但如果调太高灵敏度时会产生主机震动不止, 而灵敏度太低时会反应迟缓影响产品尺寸的准确度 (请参照第 7 页) 3. 缝制员在车缝过程中, 应保持手势给予布料一致的压力, 不可忽松忽紧, 且布料的裁剪尺寸要一致 2.Pls.Re-setting the Sensitivity. More flexible tape is with higher value. It will cause vibration, if the value is too high. How over, Lower value setting may cause slow reaction and causes incorrect tension 3.Operator must remain the same pressure to handle the sewing material and the cutting must be the same size
松紧带已经很松, 但车缝布料的效果仍然有缩皱无法平坦 Can not reach Flat sewing (Some situation need Flat sewing result)	因缝切机的前差动齿, 差动太多, 送过多的布料 There is with too much differential Feed 'Ratio in order to feed too much material	调整缝切机差动齿与主送齿的差动比为同步 (1: 1) Pls. Re-adjust the Differential Feed Ratio to 1:1 range



---

MC M8 U.S.B

[HTTP://WWW.SXSTAR-US.COM](http://www.sxstar-us.com)



6 902908 908883